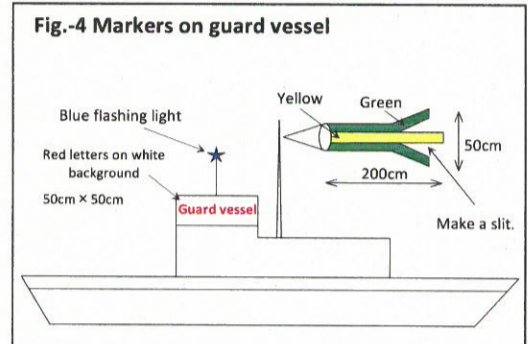
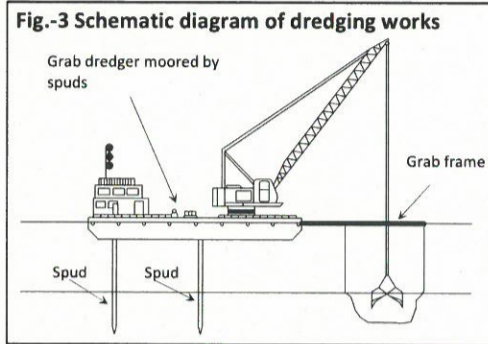
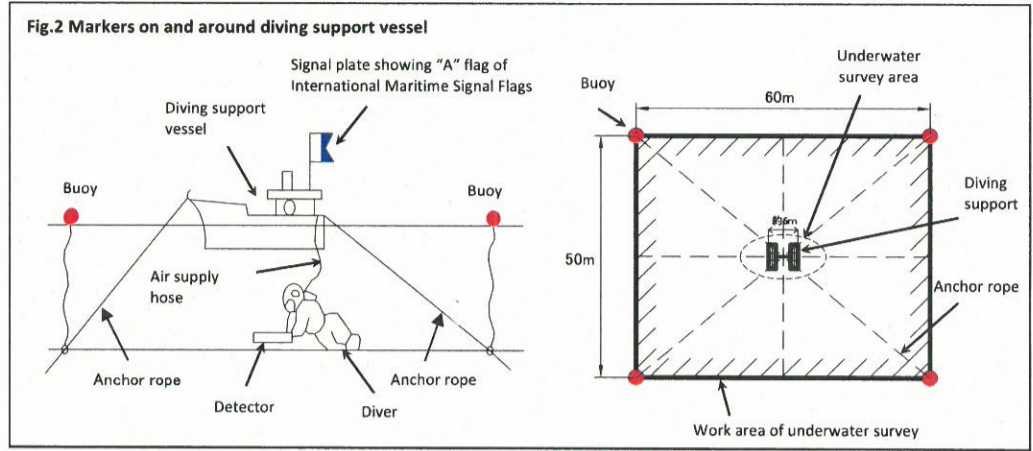
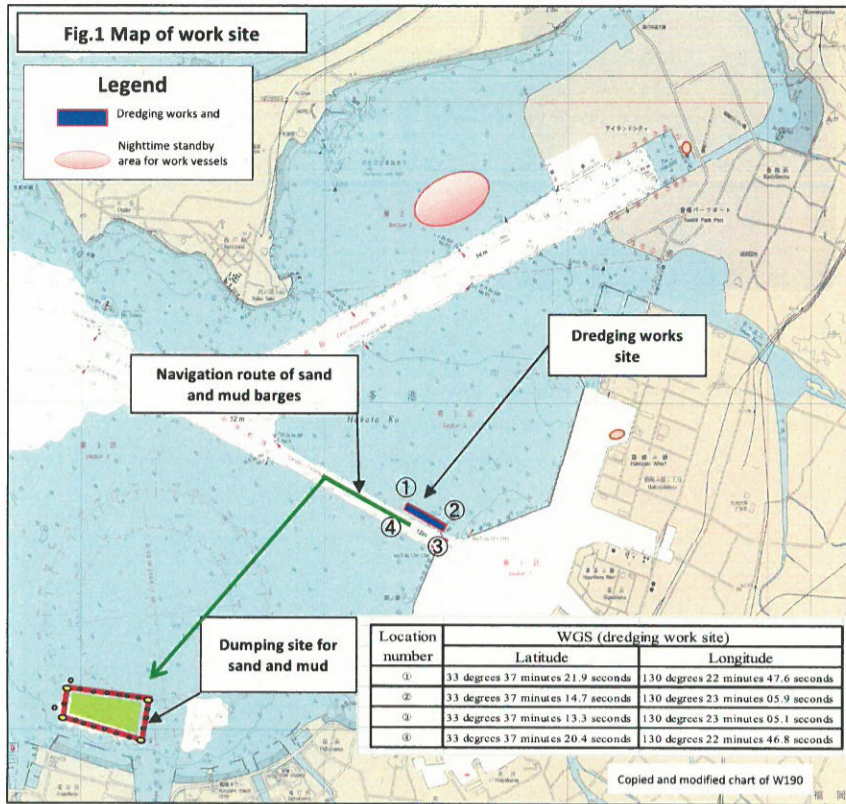


Notice: Dredging works in Hakata Port (Central Channel Area)

Hakata Port & Airport Office, Kyushu Regional Development Bureau TEL 092-752-4365
Harbormaster of Hakata Port TEL 092-281-5867

Mariners are requested to exercise due caution when navigating in the vicinity of the site where underwater survey and dredging works are conducted as follows.



1. Period of the works (refer to Fig. 1 for the location)

From mid-June to Late August, 2019 (from sunrise to sunset)

Types	Type of work vessels	Maximum number of vessels	June	July	August	Sept.	Work hours	Guard vessels
Underwater survey	Diving support vessel	four	[Blue bar]				from sunrise to sunset	two
Dredging works	Grab dredger	two		[Blue bar]				

* In principle, no works will be carried out on Saturdays, Sundays, or national holidays. However, the work schedule may be subject to change such as carrying out the works on Saturdays, Sundays and national holidays based on the progress status of the works.

2. Outline of the works

- 2-1 Underwater survey (refer to Figs. 1, and 2)
One diver dives into the water from each diving support vessel (whose maximum number is four) to work throughout the underway survey site using a compact magnetic sensor.
- 2-2 Dredging works (refer to Figs. 1, and 3)
Grab dredgers moored by spuds (whose maximum number is two) are used to carry out dredging works. Those dredgers are on standby in the waiting locations outside the works site during night time and on the days no dredging works are scheduled.

3. Safety measures

- 3-1 Underwater survey (refer to Fig.-2)
 - 1) The diving support vessel raises an "A" flag, one of the International Maritime Signal Flags, to clearly show that the underwater work is being conducted to navigating vessels.
 - 2) During the work a sandbag shaped buoy is placed at each corner of the site.
- 3-2 Dredging works (refer to Fig. 3)
Grab dredgers moored by spuds display lights or shapes as specified in the Regulations for Preventing Collisions at Sea.
- 3-3 Evacuation of work vessels from the work site
The following types of vessels are required to notify Hakata Navigation Support Office of their entry into and departure from Higashihama Wharf Area, Chuo Wharf Area and Suzaki Wharf Area so that the diving support vessels and dredgers can be moved out of the area required for the safe navigation. (Please refer to 5. Contact Information for details.)

4. Requests to navigating vessels

The following types of vessels are required to notify Hakata Navigation Support Office of their entry into Higashihama Wharf Area, Chuo Wharf Area and Suzaki Wharf Area to move the diving support vessels and dredgers in the waiting area.

Please notify the above-mentioned office no later than two hours prior to the arrival in and one hour prior to the departure from Higashihama, Chuo and Suzaki Wharf Areas when the diving support vessels and dredgers have to be moved to the waiting location. (Please refer to 5. Contact Information for details.)

Type of work	Work Zone	Total Length of Navigating Vessels	Evacuation of Navigating Vessels
Underwater survey	When evacuation is necessary during work at navigation area.	Vessel with a total length of over 200 m	Evacuation of working vessels to the outside of the navigation channel
	When evacuation is necessary during work at navigation area, due to coordination of multi-ship encounter situation.	When 2 or more Vessels with a total length of over 140 m and less than 200 m have encountered in the vicinity of work area.	
Dredging works	When evacuation is necessary during work at navigation area.	Vessel with a total length of over 200 m	Evacuation of working vessels to the outside of the navigation channel
	When evacuation is necessary during work at navigation area, due to coordination of multi-ship encounter situation.	When 2 or more Vessels with a total length of over 185 m and less than 200 m have encountered in the vicinity of work area.	

1) Mariners are requested to keep clear of the working vessels and navigate with due caution at a speed consistent with safe navigation in the vicinity. (Working vessels can be affected by wakes of passing vessels)

2) Mariners are required to be cooperative with the guard vessels when navigating in the vicinity of the works site. (Guard vessels may advise mariners to exercise caution and provide them with information in an effort to prevent their vessels from approaching too close to the works site as well as ensure their safe navigation)

5. Contact Information

- 1) Contact Hakata Navigation Support Office for information about the progress status of the dredging works. (Phone: 092-262-4621, URL: <http://www8.ocn.ne.jp/hakata>)
- 2) Contact Hakata Port & Airport Office, Kyushu Regional Development Bureau, Ministry of Land, Infrastructure, Transport and Tourism as well for more information about the dredging works. (Phone: 092-752-4365)