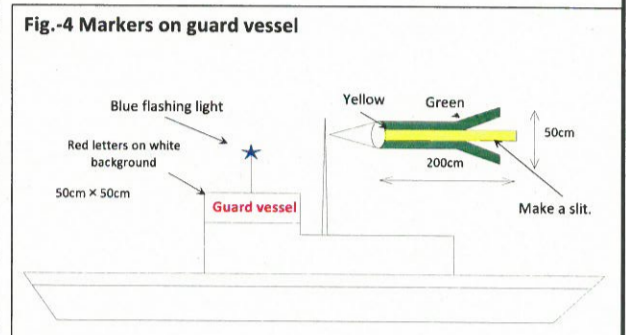
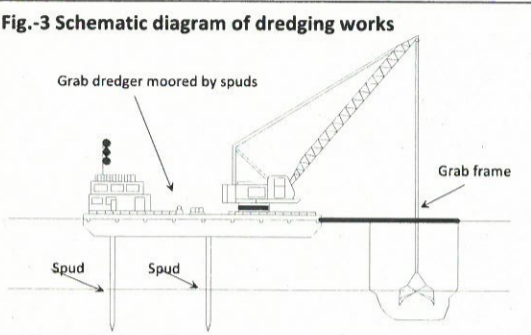
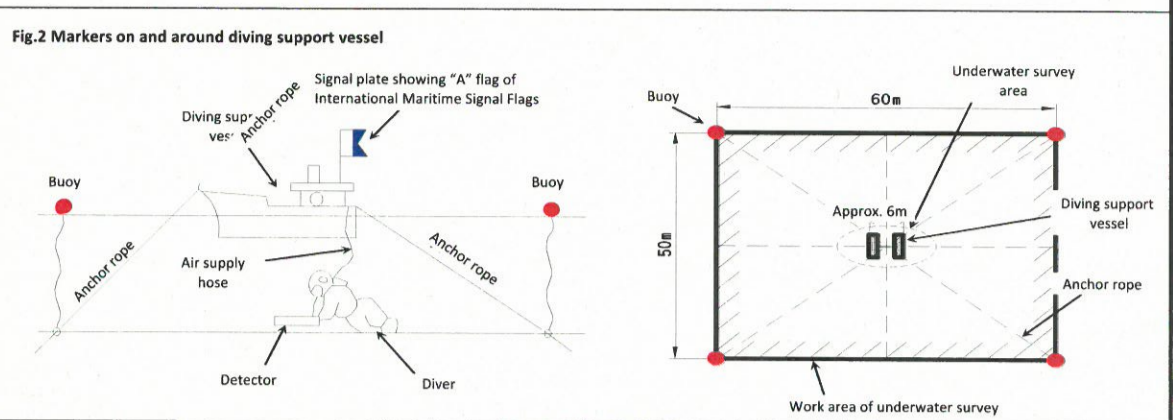
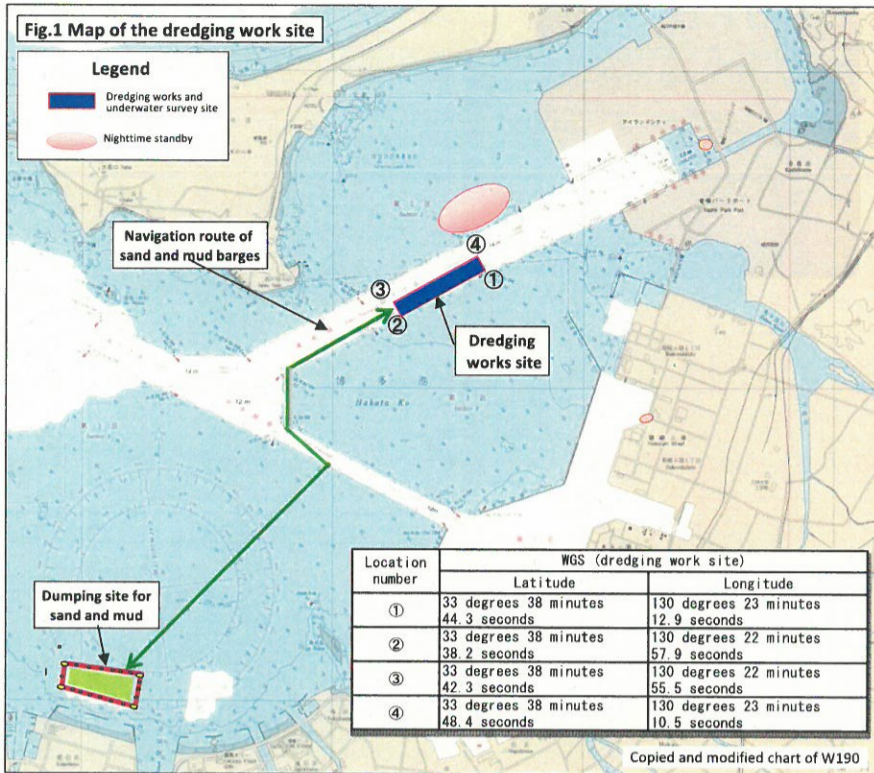


Notice: Dredging works in Hakata Port (East Channel Area)

Hakata Port & Airport Office, Kyushu Regional Development Bureau TEL 092-752-4365
Harbormaster of Hakata Port TEL 092-281-5867

Mariners are requested to exercise due caution when navigating in the vicinity of the site where relocation and return of a light buoy, underwater survey and dredging works are conducted as follows.



1. Period of the works (refer to Fig. 1 for the location)

From mid-May to Late September, 2019 (from sunrise to sunset)

| Types | Type of work vessels | Maximum number of vessels | May | June | July | August | Sept. | Work hours | Guard vessels |
|-------------------------------------|-----------------------|---------------------------|-----|------|------|--------|-------|--------------|---------------|
| Relocation and return of light buoy | Crane vessel | 1 | | | | | | from sunrise | 2 |
| Underwater survey | Diving support vessel | 4 | | | | | | | 3 |
| Dredging works | Grab | 2 | | | | | | | |

* In principle, no works will be carried out on Saturdays, Sundays, or national holidays. However, the work schedule may be subject to change such as carrying out the works on Saturdays, Sundays and national holidays based on the progress status of the works.

2. Outline of the works

2-1 Relocation and return of light buoy (refer to Fig. 5)

A crane vessel is used to relocate Light Buoy No. 6 in East Channel of Hakata Port (NoE6) and return it to the original location.

2-2 Underwater survey (refer to Figs. 1, 2 and 6)

One diver dives into the water from each diving support vessel (whose maximum number is four) to work throughout the underwater survey site using a compact magnetic sensor. The site is divided into two zones for two phases of the works: The survey in the 50m-wide zone near the center of the channel of the 150 m-wide site is completed first. Then, the survey in the Phase 2 zone commences.

2-3 Dredging works (refer to Figs. 1, 3 and 6)

Grab dredgers moored by spuds (whose maximum number is two) are used to carry out dredging works. Those dredgers are on standby in the waiting locations outside the works site during night time and on the days no dredging works are scheduled. The site is divided into two zones for two phases of the works: Dredging works in the 50m-wide zone near the center of the channel of the 150 m-wide site are completed first. Then, the works in

3. Safety measures

3-1 Measures for both underwater survey and dredging works (refer to Fig. 4)

There are two guard vessels raising a warning marker (a green-yellow-green streamer) near the crane vessel while the relocation and return of the light buoy is in progress and three guard vessels around the fleet of diving support vessels and the dredgers while the underwater survey and dredging works are in progress, respectively.

3-2 Underwater survey (refer to Fig.-2)

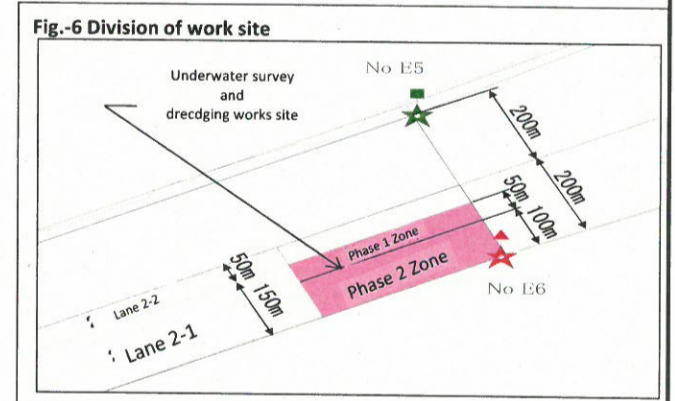
- The diving support vessel raises an "A" flag, one of the International Maritime Signal Flags, to clearly show that the underwater work is being conducted to navigating vessels.
- During the work a sandbag shaped buoy is placed at each corner of the site.

3-3 Dredging works (refer to Fig. 3)

Grab dredgers moored by spuds display lights or shapes as specified in the Regulations for Preventing Collisions at Sea.

3-4 Evacuation of work vessels from the work site

The following types of vessels are required to notify Hakata Navigation Support Office of their entry into and departure from Kashii Port Park Area and Island City Area so that the diving support vessels and dredgers can be moved out of the area required for the safe navigation. (Please refer to 5. Contact Information for details.)



4. Requests to navigating vessels

The following types of vessels are required to notify Hakata Navigation Support Office of their entry into Kashii Port Park Area and Island City Area to move the diving support vessels and dredgers in the waiting area.

Please notify the above-mentioned office no later than two hours prior to the arrival in and one hour prior to the departure from Kashii and Island City when the diving support vessels and dredgers have to be moved to the waiting location. (Please refer to 5. Contact Information for details.)

| Type of work | Work Zone | Vessels to which the work vessels need to give way | Waiting locations |
|-------------------|--------------|---|-------------------------------|
| Underwater survey | Phase 1 Zone | Vessels with a total length between 140 m and 200 m | Phase 2 Zone |
| | Phase 2 Zone | Vessel with a total length of over 200 m | Out of the navigation channel |
| Dredging works | Phase 1 Zone | Vessel with a total length of over 175 m | Out of the navigation channel |
| | | Vessel with a length between 175 m and 235 m | Phase 2 Zone |
| | Phase 2 Zone | Vessel with a total length of over 235 m | Out of the navigation channel |
| | | Vessel with a total length of over 175 m | Out of the navigation channel |

1) Mariners are requested to keep clear of the working vessels and navigate with due caution at a speed consistent with safe navigation in the vicinity. (Working vessels can be affected by wakes of passing vessels)

2) Mariners are required to be cooperative with the guard vessels when navigating in the vicinity of the works site. (Guard vessels may advise mariners to exercise caution and provide them with information in an effort to prevent their vessels from approaching too close to the works site as well as ensure their safe navigation)

5. Contact Information

- Contact Hakata Navigation Support Office for information about the progress status of the dredging works. (Phone: 092-262-4621, URL: <http://www8.ocn.ne.jp/haka.a>)
- Contact Hakata Port & Airport Office, Kyushu Regional Development Bureau, Ministry of Land, Infrastructure, Transport and Tourism as well for more information about the dredging works. (Phone: 092-752-4365)