

Notification of Construction Work of Pier at Hakata Port (Island City District)

Hakata Port & Airport Office, Kyushu Regional Development
Harbormaster of Hakata Port

TEL 092-752-4365
TEL 092-281-5867

Please note that the following construction work of the pier at Hakata Port (Island City District) will be carried out and all vessels traveling nearby the area should pay special attention.

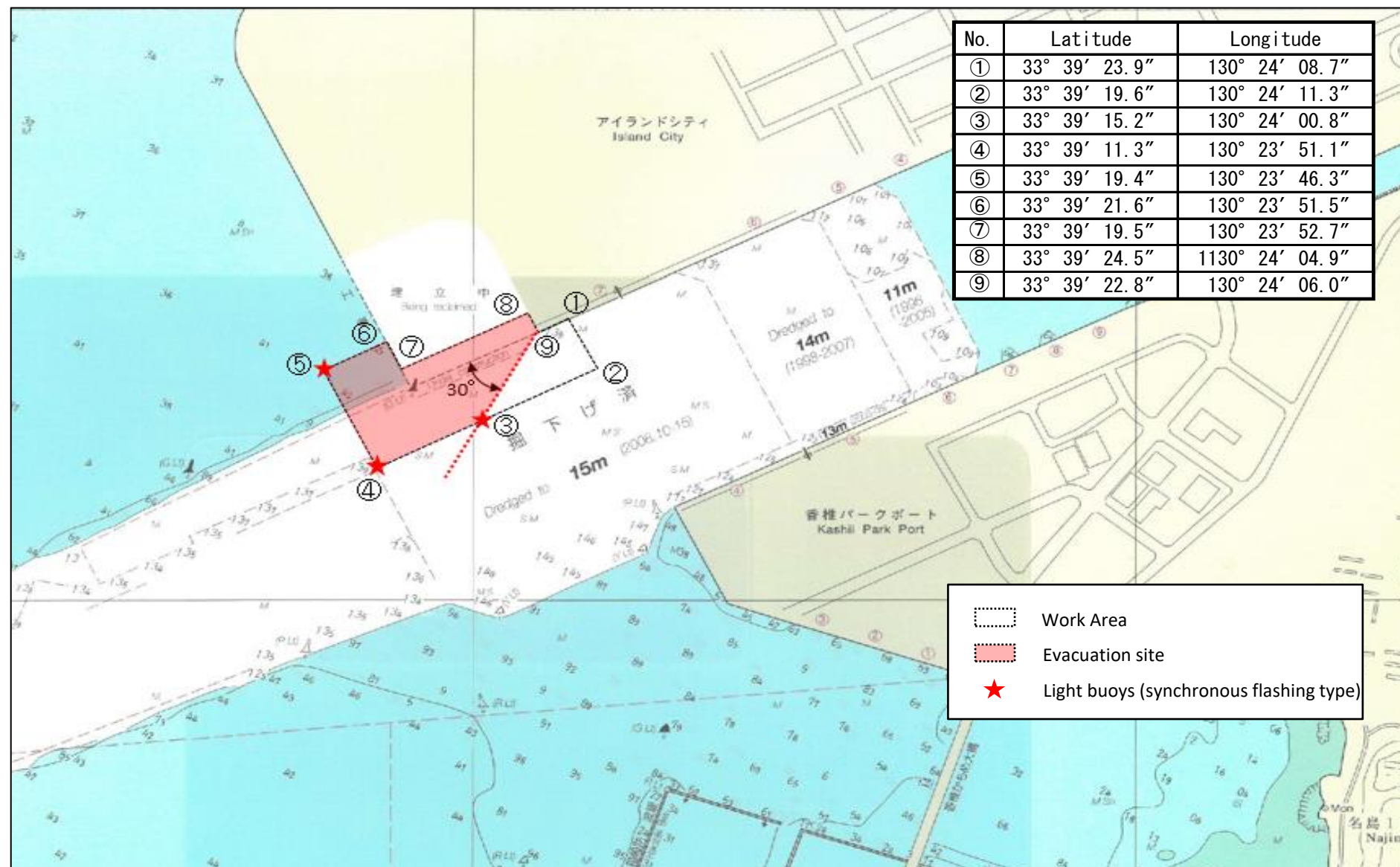
1. Period of Work

Mid September 2020 to late November 2020 (from sunrise to sunset)

In principle, construction work will not be carried out on Saturdays, Sundays, and national holidays.

However, depending on the progress of the construction, the work schedule may be subject to change and construction work may also be carried out on Saturdays, Sundays, or national holidays.

2. Work Area



3. Request to Traveling Vessels

- 1) In the event of the following vessels' entrance into or leave from the port, the work vessels will be evacuated. Therefore, please contact the Hakata Navigation Support Office (TEL092-262-4621) at least 2 hours before.

Target wharf	Entrance into / Leave from	Overall length of container	
		Less than 200 m	200 m or more
Kashii Park Port District Pier No. 4	When entering the port (Berthing starboard alongside)	No evacuation	No evacuation
	When leaving the port (turning)	No evacuation	Evacuation
Island City District Pier No. 7	When entering the port (Berthing port alongside)	Evacuation(*1)	Evacuation
	When leaving the port (turning)	No evacuation(*2)	Evacuation

*1 Evacuation is not necessary for berthing vessels in the direction of departure.

*2 If the anchors of work vessels do not cross the boundary with the adjoining berth.

- 2) Vessels traveling near the construction area should stay as far as possible from work vessels and travel at an appropriate speed. (The impact of waves generated by traveling vessels may affect work vessels.)
- 3) Vessels navigating near the construction area are asked to cooperate with warning vessels. (We may prevent general ships from approaching the construction area, as well as give alerts and provide information to enable smooth navigation.)

4. Further Information

Information on the construction is provided by the following

• Hakata Navigation Support Office Website →



• Land Conservation Section of Hakata Port & Airport Development Office, Kyushu Regional Development Bureau