

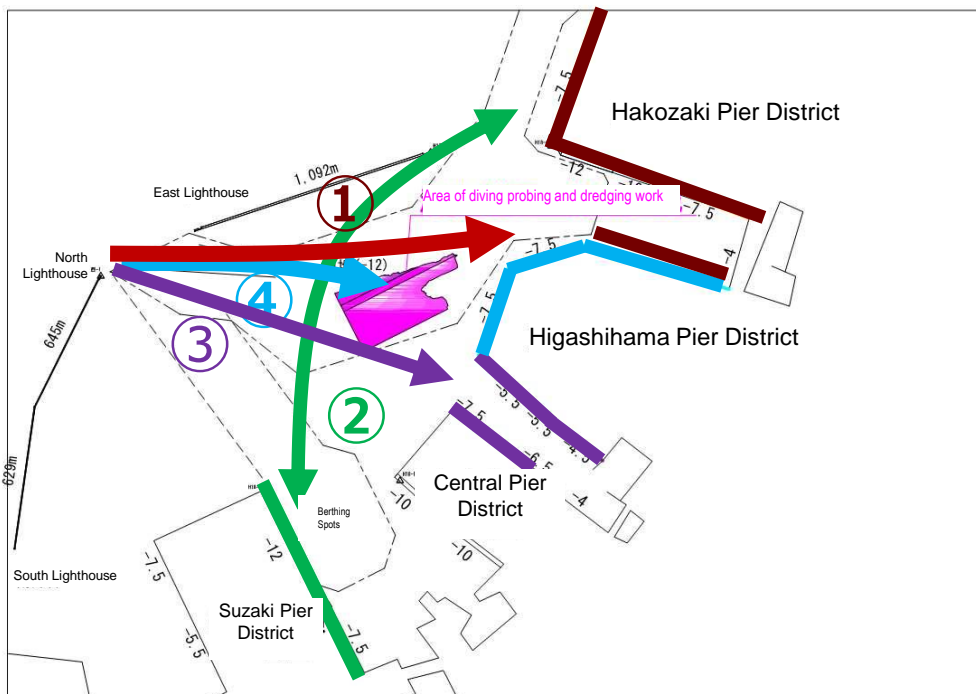
# Notification of Slated Dredging Work off the Shore of Central Pier in Hakata Port

Hakata Port and Airport Development Office,  
Kyushu Regional Development Bureau  
General Director of Hakata Port

TEL 092-752-4365  
TEL 092-281-5867

Diving probing and dredging work will be carried out as described in the following. People concerned to sail nearby areas are advised to take caution.

## 1. Work area



## 2. Work period

April through June, 2021 : Diving work  
August through September, 2021 : Dredging work

## 3. Description of work

**Diving work:** Divers arriving at the work area in boats (4 at most) to engage in removal of geomagnetic field-disrupting substances

**Dredging work:** Dredging work carried out by spud-moored grab dredgers (2 at most) and earth-transporting vessels

## 4. Requests to vessels sailing in Hakata Port

(1) The Office for Hakata Port Development and Provision of Supporting Work for Safety of Sailing (Tel: 092-262-4621) must be notified of **any vessel's** berthing to or setting sail from the berths mentioned below at least **2 hours before berthing** or **1 hour before setting sail**.

**Route ① from the central sea route to Hakozaki Pier or to the north side of Higashihama Pier: For vessels with a length of over 85 m**

→ in principle, a navigable area is to be secured by evacuation of the fleet of work vessels, however, **waiting may be requested depending on the place** where work is proceeding.

**Route ② from the east side of Suzaki Pier to Hakozaki Pier (vessels shifting in the port): For 10,000 GT or over vessels**

→ a navigable area is to be secured by evacuation of the fleet of work vessels, so it is possible to navigate as usual.

**Route ③ from the central sea route to the east side of Central Pier or to the south side of Higashihama Pier : For vessels with a length of over 100 m**

→ in principle, a navigable area is to be secured by evacuation of the fleet of work vessels, however, **waiting may be requested depending on the place** where work is proceeding.

**Route ④ from the central sea route to the tip or north side of Higashihama Pier : For vessels berthing to or setting sail from Berth No. 4 or Berth No. 5 of Higashihama Pier**

→ a navigable area to be secured by evacuation of the fleet of work vessels. When berthing to or setting sail from Berth No. 4 or Berth No. 5, please enter or leave the port through the south side of Berth No. 4 and the north side of Berth No. 5.

\* **If evacuation of the fleet of work vessels is required**, even in the case other than the above, please contact the Office.

(2) Vessels sailing near the work area are requested to remain as far away as possible from the fleet of work vessels and navigate at an appropriate speed while paying close attention to the fleet. Also, they are requested to obey any guidance issued by patrol boats.

## 5. Provision of information

Additional information on the construction work is available from the sources listed below.

- Website of Office for Hakata Port Development and Provision of Supporting Work for Safety of Sailing →
- Maintenance Section of Hakata Port and Airport Development Office, Kyushu Regional Development Bureau TEL 092-752-4365

