

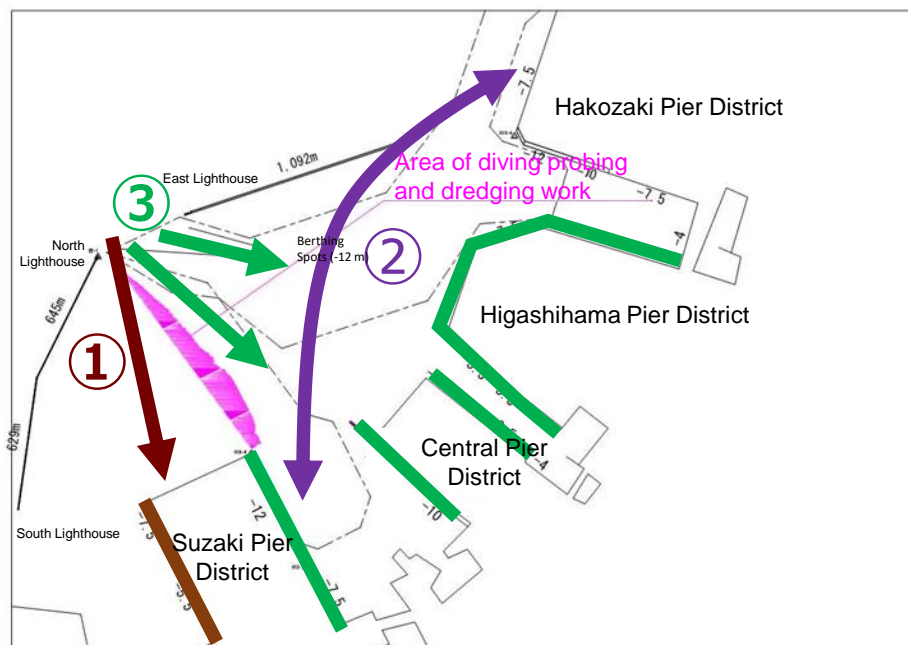
Notification of Slated Dredging Work off the Shore of Suzaki Pier in Hakata Port

Hakata Port and Airport Development Office,
Kyushu Regional Development Bureau
General Director of Hakata Port

TEL 092-752-4365
TEL 092-281-5867

Diving probing and dredging work will be carried out as described in the following. People concerned to sail nearby areas are advised to take caution.

1. Work area



2. Work period

April through June, 2021 : Diving work
June through August, 2021 : Dredging work

3. Description of work

Diving work: Divers arriving at the work area in boats (4 at most) to engage in removal of geomagnetic field-disrupting substances

Dredging work: Dredging work carried out by spud-moored grab dredgers (2 at most) and earth-transporting vessels

4. Requests to vessels sailing in Hakata Port

(1) The Office for Hakata Port Development and Provision of Supporting Work for Safety of Sailing (Tel: 092-262-4621) must be notified of **any vessel's** berthing to or setting sail from the berths **mentioned below** at least **2 hours before berthing** or **1 hour before setting sail**.

Route ① from the central sea route to Aratsu or to Nagahama: For vessels with a length of over 100 m
→ a navigable area is to be secured by evacuation of the fleet of work vessels, so it is possible to navigate as usual.

Route ② from the east side of Suzaki Pier to Hakozaki Pier (vessels shifting in the port): For 10,000 GT or over vessels

→ a navigable area to be secured by evacuation of the fleet of work vessels

Route ③ from the central sea route to the east side of Suzaki Pier, to Central Pier or to Higashihama Pier

(i) **Vessels berthing to or setting sail from Berth No. 4 of Suzaki Pier**

→ a navigable area is to be secured by evacuation of the fleet of work vessels, so it is possible to navigate as usual.

(ii) **For vessels with a length of over 128 m**

→ in principle, a navigable area is to be secured by evacuation of the fleet of work vessels, however, **waiting may be requested depending on the place** where work is proceeding.

* **If evacuation of the fleet of work vessels is required**, even in the case other than the above, please contact the Office.

(2) Vessels sailing near the work area are requested to remain as far away as possible from the fleet of work vessels and navigate at an appropriate speed while paying close attention to the fleet. Also, they are requested to obey any guidance issued by patrol boats.

5. Provision of information

Additional information on the construction work is available from the sources listed below.

- Website of Office for Hakata Port Development and Provision of Supporting Work for Safety of Sailing →
- Maintenance Section of Hakata Port and Airport Development Office, Kyushu Regional Development Bureau TEL 092-752-4365

