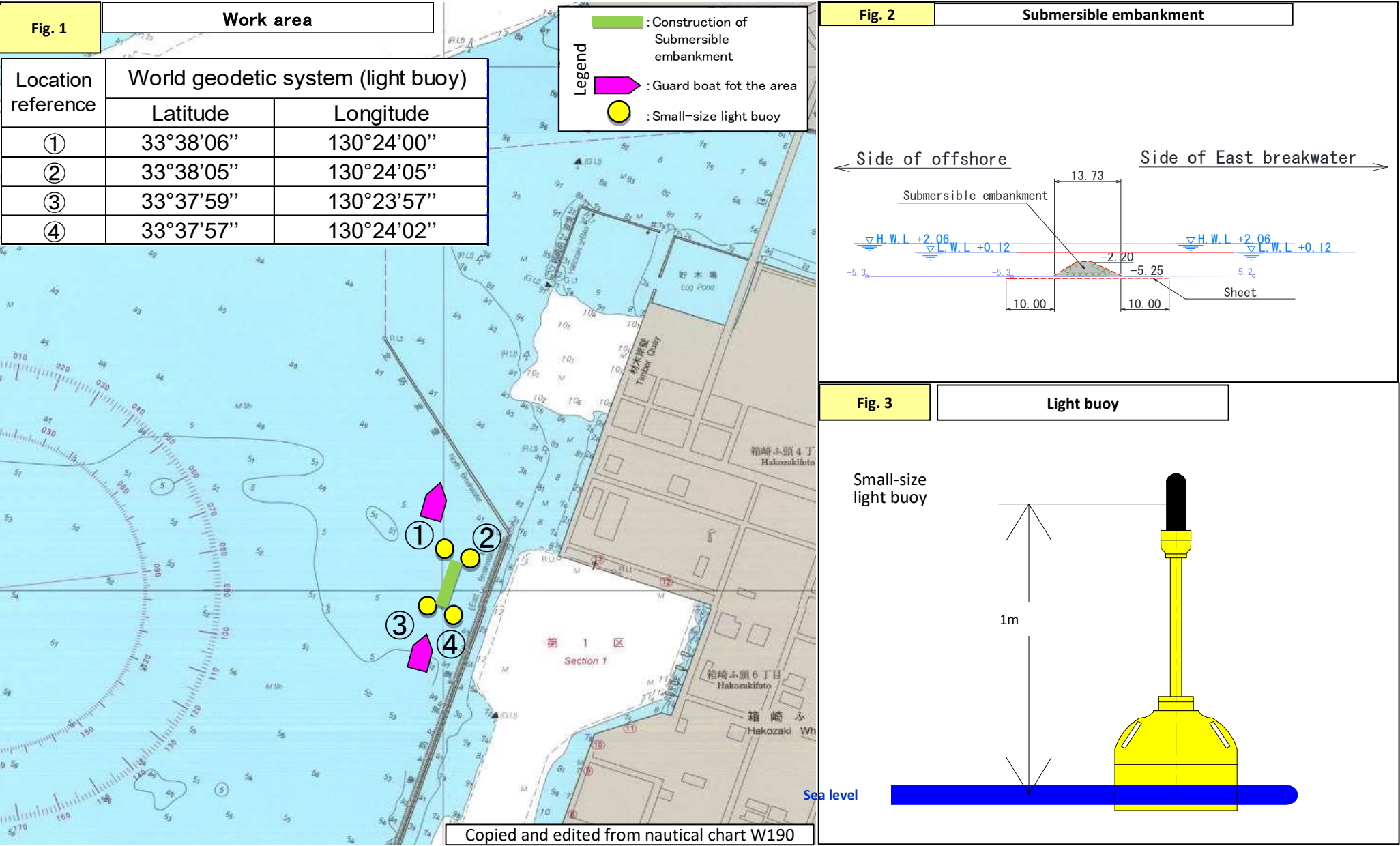


Notice of Submersible embankment off Hakozakifuto

We will construct of Submersible embankment as follows. Vessels traveling nearby waters are requested to pay attention to and cooperate with this work.



1. Work period (see Fig. 1 for work area)

From mid-October to late-November 2024 (From sunrise to sunset)

Work details/type	Workboat type	Maximum number of workboats	Oct			Nov			Working hours	Guard boat
Lay of sheet	Crane ship	3							From sunrise to sunset	2 vessels
Construction of Submersible embankment	Diver boat Stone carrer									

- In principle, we do not work on Saturdays, Sundays, and public holidays. (Depending on the progress of work, however, we may need to change our working hours, days, and period.)
- We do not deploy guard boats on non-working days and at night.

2. Work outline (see Figs. 1 and 2)

(Construction of Submersible embankment off Hakozakifuto)

- Sheets are laid in the area by crane ship, etc.
 - Using crane ship, etc., the stone materials are placed in the area for construction the submersible embankment. As shown in Fig.2, after place, submersible embankment will be consistently exist over the seabed.
- (During the work period, workboats may anchor in the area at night.)

3. Safety measures (see Figs. 1 and 3)

- Designation of work area
the following standard light buoys will be installed to indivate the work area.

Location	Type	Light color	Light quality	Light height	Visible distance	Note
Corners①,②,③,④	Small-size light buoy	Yellow	1 flash every 4 seconds	1 m	4.5 km	Synchronous flashing

4. Request to the vessels traveling nearby waters

- Vessels traveling near the work area should reduce their navigation speed within a range that does not affect their maneuvering and travel as far as possible away from the area site indicated by the light buoys.

5. Provision of Information

- Construction project: Third Engineering Section, Hakata Port and Airport Development Office, Kyushu Regional Development Bureau, Ministry of Land, Infrastructure, Transport and Tourism; Tel: 092-752-4365